

VOXHALL

VENUE SPECIFICATION

CONTACT INFO	PAGE 2
GENERAL INFO	PAGE 3
SOUND INFO	PAGE 6
LIGHT INFO	PAGE 8
HANGING PLOT	PAGE 10
PARKING MAP	PAGE 13

VOXHALLS VISION

To maintain our position among the best venues in Europe!

VOXHALLS MISSION

VoxHall is committed to the presentation and promotion of a cultural programme with a high quality level. VoxHall focuses on music of today that appeals to the particular and curious consumer of culture in general.

VOXHALLS VALUES

Volunteers, commitment, trust and competent handling of all of our activities caters to the best possible environment for the band, the audience and employees.

VOXHALL

CONTACT INFORMATION

VENUE

VOXHALL
VETER ALLE 15
8000 AARHUS C
DENMARK

www.fondenvoxhall.dk
voxhall@fondenvoxhall.dk
+ 45 87 30 97 97

PRODUCTION

SØREN HERMANSEN
produktion@fondenvoxhall.dk
+ 45 87 30 97 94
+ 45 26 83 97 32 (Emergency only)

PROMOTER

TOM FJEDERHOLT
tom@fondenvoxhall.dk
+ 45 87 30 97 95

LIGHT

JOHN HEDEGAARD
light@fondenvoxhall.dk

SOUND

KENNETH ANDERSEN
sound@fondenvoxhall.dk

VOXHALL

GENERAL INFORMATION

DRESSING ROOMS

Voxhall has 3 dressing rooms.

All rooms have comfortable seating (couches and chairs), tables, electrical outlets, full length mirrors, coffee / the table with kettle, iron & ironing board.

Each room has a codelock. The code for the dressing room will be provided to the tourmanager at load in.

INTERNET

Voxhall have wireless internet access throughout the venue. The code for the wireless will be provided upon request during advance or at load in.

ACCESS TO STAGE

Dressing rooms are accessible to the stage without passing through public areas.

SHOWERS

2 rainshowers in connection to the dressing rooms. All with hot and cold running water.

TOILETS

2 toilets in connection to the dressing rooms.

WASHING FACILITIES

Voxhall has a washer and a dryer with detergent. It is free to use.

Note: No use after midnight!

LOAD IN

Direct on stage by slope from trailer or truck.

STAGE

Width x Depth x Hight x Clearence
9 x 5,5 x 0,9 x 4,3 Meters
29,5 x 18 x 2,95 x 14,1 Ft

STAGE BARRIERS

We supply barriers in front of stage. Please ask for picture if necessary.

BUS POWER

Power for nightliners is located around the corner from the load in door. Voxhall supply the following:

2 x 230 V (blue CEE)

1 x 32A CEE

1 x 16A CEE

PRODUCTION OFFICE

We can supply a desk in our office with access to copier and wireless internet. A code for the office door will be provided to tour manager upon arrival.

PARKING

On parking lot in front of the load in door. The parking lot is open 24/7
I will collect the number plate during the advance and provide you with free parking during your stay.
For more info, please see the parking map provided upon request during advance.

RUNNER

We don't supply runner.

CAPACITY

700

DINNER

Dinner is served across the street at the MIBFoodcourt. The kitchen closes at 21.30. Look for menu in the dressing room or retrieve it during advance.

MERCHANDISE

Merch is to be sold from the café area.

We will supply lights and tables. We don't charge any commission!

STAGEHANDS

We will supply sufficient amount of stage hands depending on the size of the production.

VOXHALL

SOUND SPECIFICATION

SPEAKER SYSTEM (FLOWN)

Meyer Sound JM-1P + 1100-LFC

- 6 x Meyer Sound JM-1P (3 per side)
- 4 x Meyer Sound 1100-LFC
- 4 x Meyer Sound UPA-1P downfills
- 2 x Meyer Sound UPQ-1P (Balcony fills)
- 2 x Turbosound TCS-56 Full-range (Delay)
- 2 x Turbosound TCS-30 Full-range (Balcony)
- 2 x Function One F55 (Delay under balcony)

FRONT OF HOUSE

- 1 x Soundcraft VI3000
- 1 x ASL Intercom system FOH – Mon.
- 1 x 10Eazy SPL measurement system

MONITOR SYSTEM (STAGE LEFT):

- 1 x Soundcraft VI3000
- 10 x Meyer Sound MJF-210 Monitor
- 2 x Meyer Sound UPA-1P (sidefills)
- 2 x Meyer Sound 500HP (sidefills & drums sub)
- 1 x Intercom system, Mon – FOH

MICROPHONES:

9 x Shure Beta 58A, 2 x Shure Beta 52
2 x Shure Beta 91
6 x Shure SM 58, 10 x Shure SM 57
2 x Shure B57A
2 x Shure SM 94
4 x Shure KMS 137
1 x Beyer M88
3 x Sennheiser MD 421
1 x Sennheiser C 409
4 x Sennheiser e604
1 x AKG D112
2 x AKG 214
2 x AKG 414 ULS

12 x BSS AR 133 mono DI
4 x Custom made mono DI
2 x Custom made dual DI

MICROPHONE STANDS:

18 x Tall stand with boom
14 x Short stand with boom
3 x Tall round base stand without boom

RISERS:

10 x (1 X 2 Meters carpeted)
height of risers - 30 cm or 50 cm or 90 cm

POWER:

1 x (3x63A) 5 pin 50 Hz CEE HPFI, inhouse PA
1 x (3x63A) 5 pin 50 Hz CEE non HPFI, available for recording truck
1 x (3x32A) 5 pin 50 Hz CEE HPFI, available for visitors
2 x (3x16A) 5 pin 50 Hz CEE HPFI, available for visitors
2 x (1x10A) 3 pin 50 Hz CEE HPFI, for backline
2 x (1x10A) 3 pin 50 Hz CEE HPFI, for buspower, placed outside building

SOUND

KENNETH ANDERSEN
sound@fondenvoxhall.dk

VOXHALL

LIGHT SPECIFICATION

8 x PAR64 Floorcan – 1kw (CP61)

6 x 1kw Selecon Fresnell

2 x Martin Atomic 3000 Strobe

2 set ACL (PAR46/28V/250W-No Gelframes)

11 x Alkalite TP81 for backdrop

12 x Robe VIVA cmy Spot (8 on stage, 4 in frontrig)

12 x Robe LEDbeam150 WASH (on stage)

2,2 kw Dimmers

1 x Avolites Expert PearlPro

2 x LeMaitre MVS Hazer – DMX control

All connections: CEE og Harting (16 pin)

A good selection of LEE filters.

4 x 5pins DMX for guest

2 x RJ45 CAT5e (Ethernet) from FOH to Dimmer (straight)

Motorised backdrop (10meters)

2 x 10 meter FD34 GuestTruss in 2x500kg motorhoists.

Power for artist lightequipment: 2 x 63/3 Amp. (RedCEE form)

All fabrics for stage use must be fireproofed.

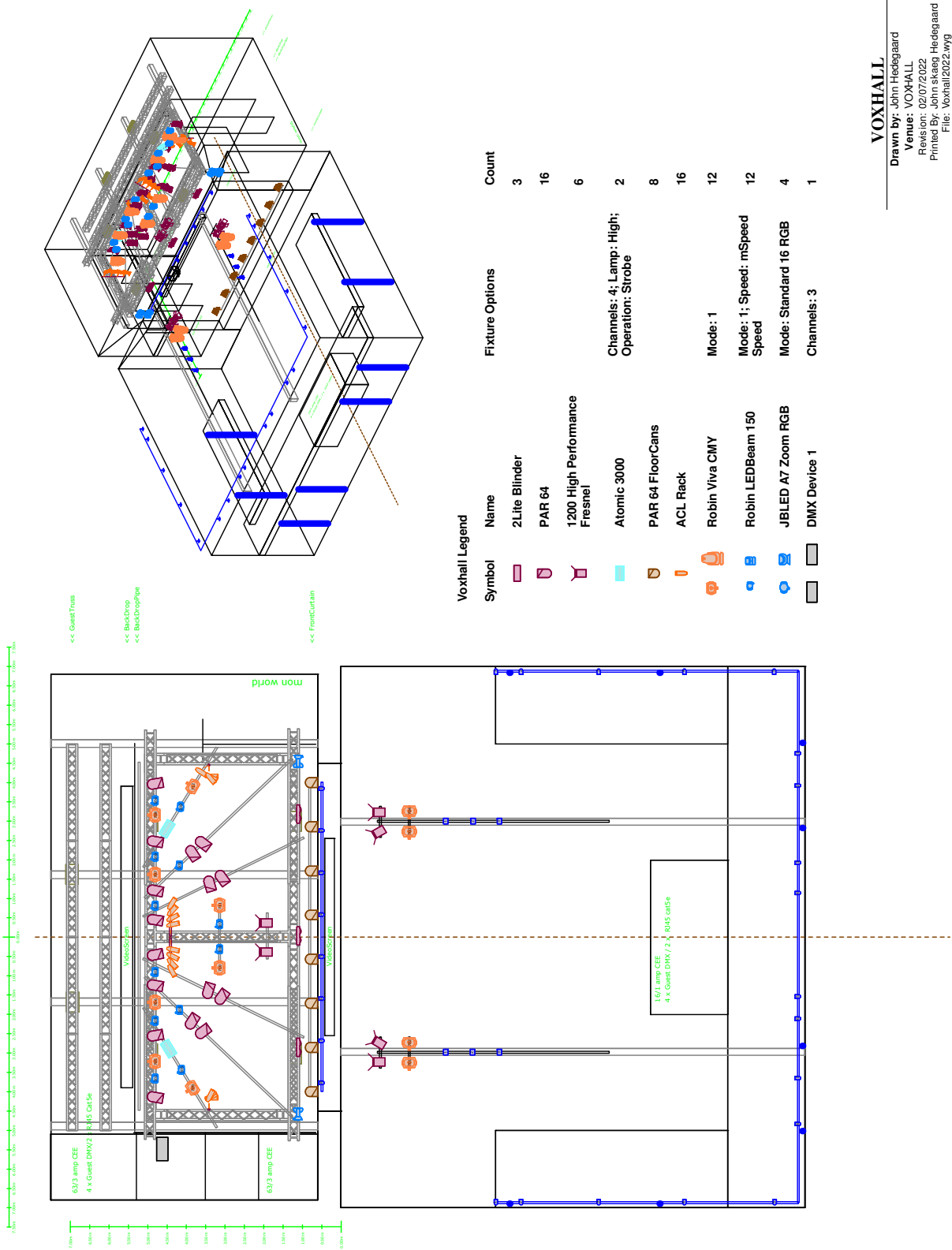
Please bring the "white-papers" for the fabric, or bring a small "test-piece"

Wysiwyg pre-programming file, patch etc available at:

<https://www.dropbox.com/sh/j6bgnhgg9nkoyah/AACGYaYCxd3cZHY8TW1M09hAa?dl=0>

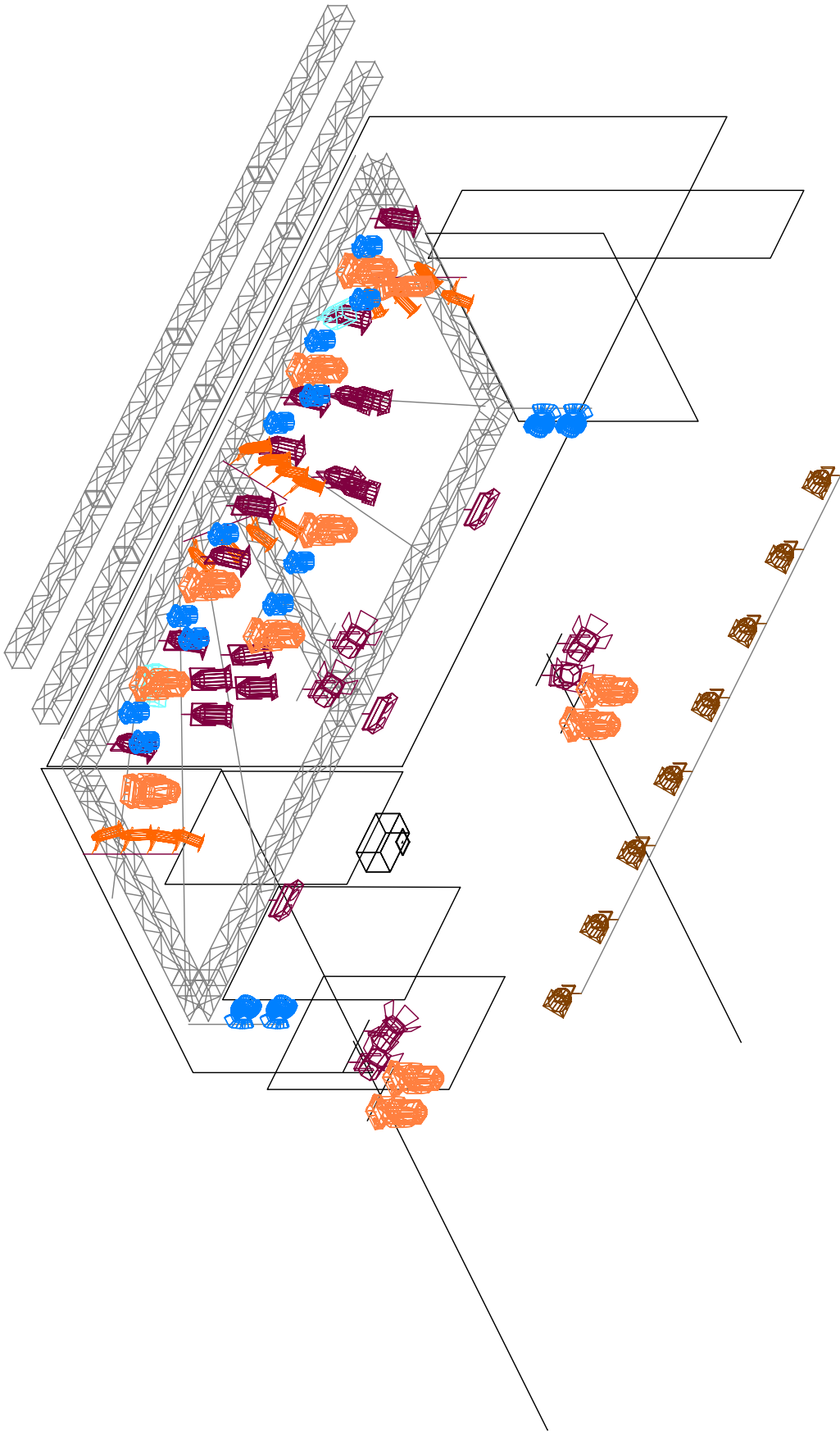
LIGHT

JOHN HEDEGAARD
light@fondenvoxhall.dk



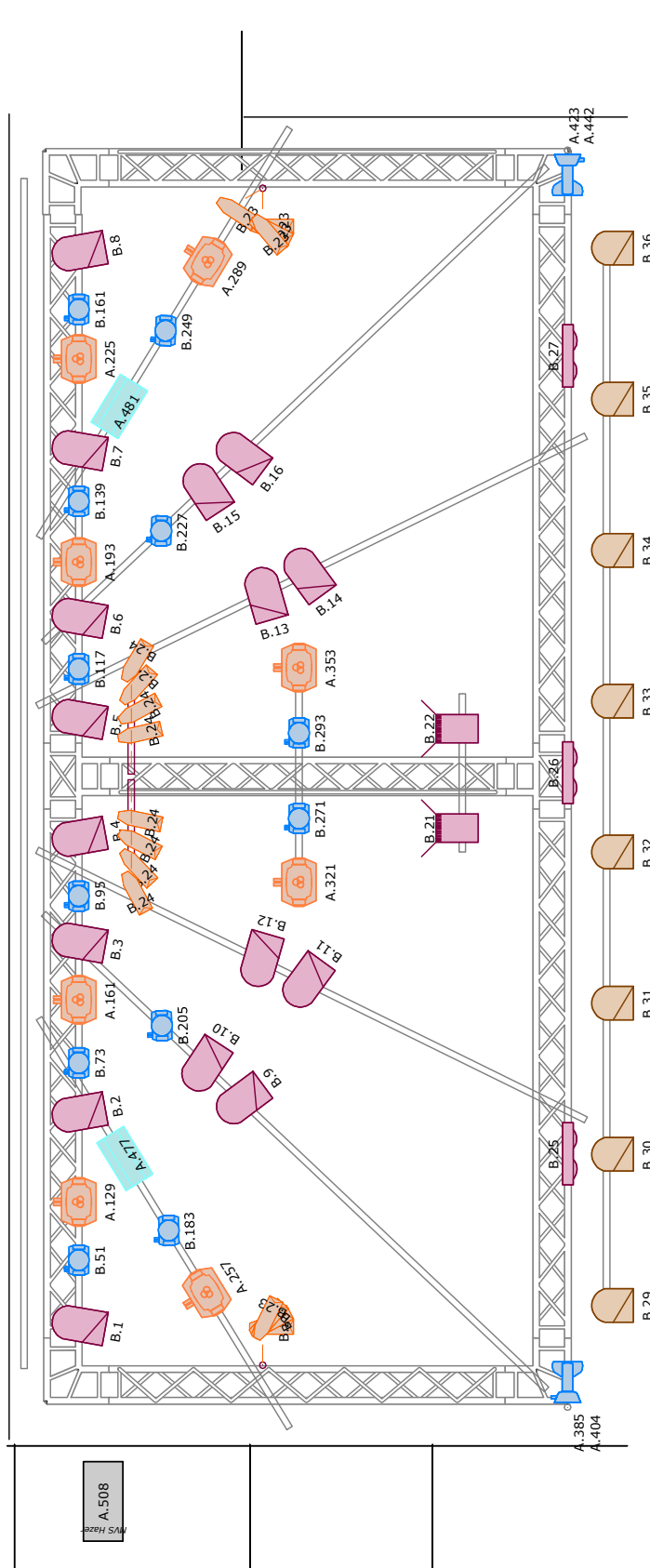
VOXHALL

Drawn by: John Hedegaard
 Venue: VOXHALL
 Revision: 02/07/2022
 Printed By: John skaeg Hedegaard
 File: Voxhall2022.wyg



VOXHALL

Drawn by: John Hedegaard
Venue: VOXHALL
Revision: 0207/2022
Printed By: John skaaq Hedegaard
File: Voxhall2022.wyg



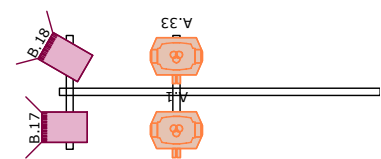
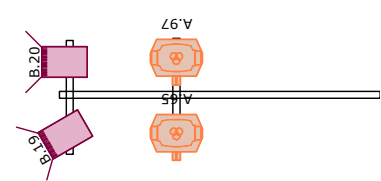
NOTES

Avolites Profile Expert - Titan Software
 4 x 10m GuestThru (FD34) in 2 x 50kg truss
 2 x 603 Amps CEE Form (red)
 10m GuestThru (FD34) in 2 x 50kg truss
 10m Backdrop pole

VOXHALL

Drawn by: John Hedegaard
 Venue: VOXHALL
 Revision: 0207/2022
 Printed By: John Hedegaard
 File: Voxhall2022.wg

Voxhall Legend			Fixture Options		Count
Symbol	Name				
	2Lite Blender				3
	PAR 64				16
	1200 High Performance Fresnel				6
	Atomic 3000				2
	PAR 64 FloorCans				8
	ACL Rack				16
	Robin Viva CMY				12
	Robin LEDBeam 150				12
	JBL LED A7 Zoom RGB				4
	DMX Device 1				1
			Channels: 3		

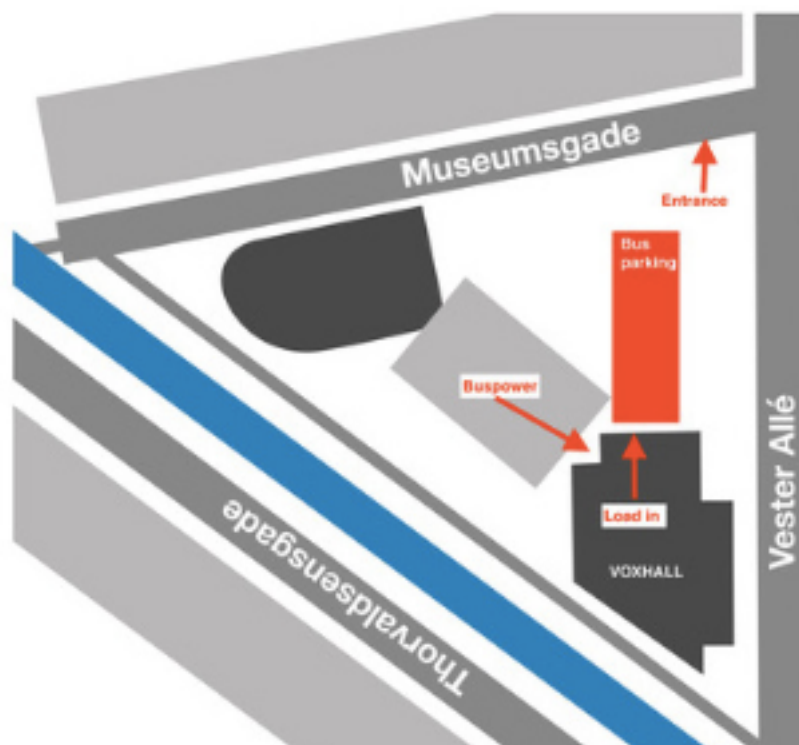


VOXHALL

PARKING INFORMATION

PARKING

On parking lot in front of the load in door. The parking lot is open 24/7
I will collect the number plate during the advance and provide you with free parking during your stay.



ADDRESS

VoxHall
Vester Allé 15
8000 Aarhus C
Denmark